



SPX-660 Pipelayer

Max lift capacity	65,300 kg / 143,960 lb
Operating weight	45,995 kg / 101,400 lb
Net flywheel power	261 kW / 350 HP



SPX-660 PIPELAYER

- **TIER 3 ENGINE**

All SPX-Series pipelayers are built with Caterpillar Tier 3 engines.

- **HYDROSTATIC SYSTEM**

State-of-the-art hydrostatic system insures safety and reliability and is especially efficient when working on steep grades.

- **HYDRAULIC KIT**

The same kit used in the conversion of Caterpillar, Komatsu and Fiat pipelayers is used on this machine.

- **SAFETY**

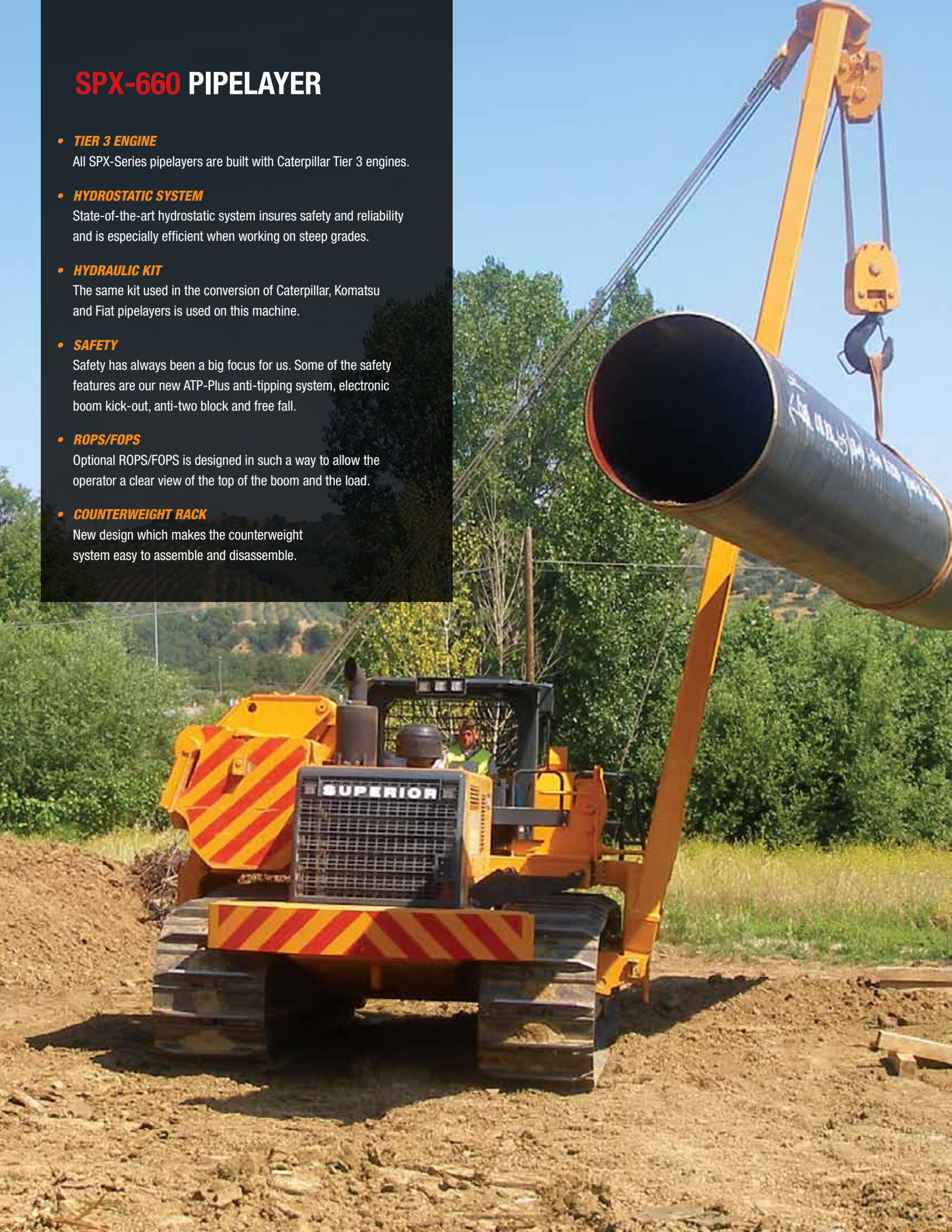
Safety has always been a big focus for us. Some of the safety features are our new ATP-Plus anti-tipping system, electronic boom kick-out, anti-two block and free fall.

- **ROPS/FOPS**

Optional ROPS/FOPS is designed in such a way to allow the operator a clear view of the top of the boom and the load.

- **COUNTERWEIGHT RACK**

New design which makes the counterweight system easy to assemble and disassemble.



GENERAL SPECIFICATIONS

ENGINE

Type	Caterpillar
Model	C9 ACERT
Net flywheel power (DIN 6270-SAEJ 1349)	350 HP - 261 kW

HYDRAULIC SYSTEM

Main pumps	(Bosch-Rexroth) 3 independent variable pumps
Maximum capacity	2x180 lt/min - 1x119 U.S. gal/min
Maximum operating pressure	400 bar - 5,800 p.s.i.
Service pumps	1 tandem gear type
Maximum capacity	50 lt/min - 13 U.S. gal/min

TRANSMISSION

Type	Hydrostatic closed circuit
Brakes	(2) Integrated negative control
Final drives	Epicycloidal oil soaked
Maximum speed:	
- 1 speed	2.6 km/h - 1 miles/h
- 2 speed	6.2 km/h - 3.8 miles/h

CONTROLS

Type	Twin pilot operated
Safety	Emergency shut-off

TPS System: twin steering system to provide with other two levers, to drive the track independently in order to guarantee small and precise movements.

BOOM

Type	Std. 20 ft / 6.1 m welded box square section
Optional	24 ft / 7.4 m welded box square section
Diameter wire rope	19 mm - 3/4 in
Minimum breaking strength rope	323 KN - 72,530 lb
Part load line	6
Part boom line	5

ADJUSTABLE COUNTERWEIGHTS

QD-CS: quick-disconnected counterweight system. For the possibility of disassembly in a short time (all the counterweight pack.)

Removable counterweight	13 leaves 600 kg - 1,300 lb each
Total weight extendable	9,900 kg - 21,825 lb

TRACK FRAME

Hard track frame with sealed and lubricated chain	
Number of bottom rollers	8+8
Number of carrying rollers	2+2
Gauge	2.4 m - 7.9 ft
Length of track on the ground	3.6 m - 11.8 ft
Standard shoes width	750 mm - 30 in
Ground contact area	54,000 cm ²
Optional shoes width	32 in
Ground contact area	57,600 cm ²

FLUID CAPACITIES

Fuel tank	310 liters / 82 U.S. gal
Hydraulic system circuit	280 liters / 74 U.S. gal
Cooling system	45 liters / 12 U.S. gal
Engine oil	27 liters / 7 U.S. gal

ELECTRIC SYSTEM

Operating voltage	24 V
Maintenance free supplied batteries	2
Capacity (total)	220 Ah
Starter capacity	7.5 Kw
Alternator	55 A

HYDRAULIC WINCHES

Type	Hydraulic controlled drums (reversible.) Driven by variable flow hydraulic pump and control valve block in open circuit.	
Final drive	Compact hydrostatic drive unit, three-stage planetary gear	
Brakes	Integrated multiple disk brake, spring applied hydraulic release	

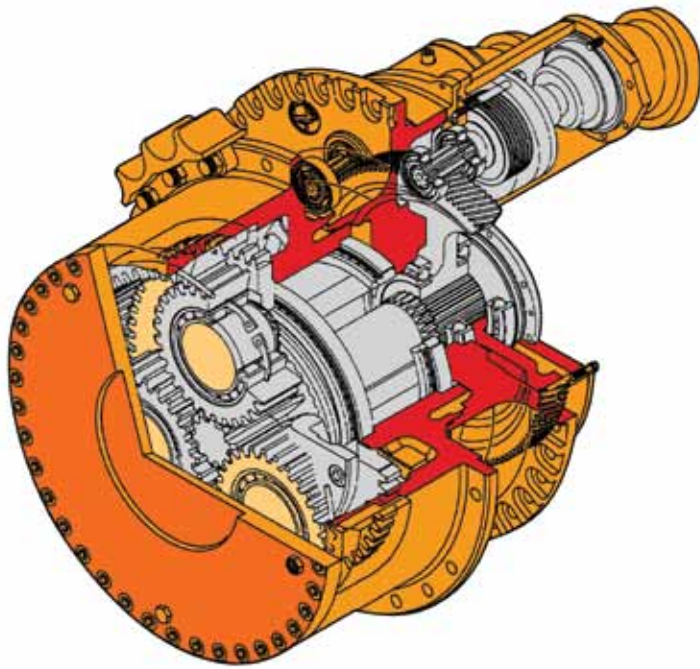
WINCH

	<i>Hook</i>	<i>Boom</i>
Drum diameter	390 mm/15.3 in	390 mm/15.3 in
Flange diameter	590 mm/23.2 in	530 mm/20.8 in
Drum length	360 mm/14.1 in	360 mm/14.1 in
Capacity (19 mm - 3/4in)	136 m/446 ft	105 m/344 ft
Wire rope installed	68 m/223 ft	51 m/167 ft
Hook speed	0-16 m/min - 0-52 ft/min	

OPTIONAL

Closed cabin
Air conditioning
Rear winch
Extra long boom

WINCH SPECIFICATIONS



MAIN PUMP

Type	Bosch-Rexroth axial piston variable displacement pump
------	---

VALVES

Type	Bosch load-sensing mobile control block proportional directional valves
Max capacity	286 liters/min - 75.5 U.S. gal/min
Working pressure	320 bar - 4,642 p.s.i.

CONTROL

Type	Pilot units for remote control of winch motors Progressive and sensitive operations
------	--

SERVICE PUMP

Type	Gear pump
Max capacity	10 liters.min - 2.6 U.S. gal/min
Working pressure	30 bar - 435 p.s.i.

HYDRAULIC TANK

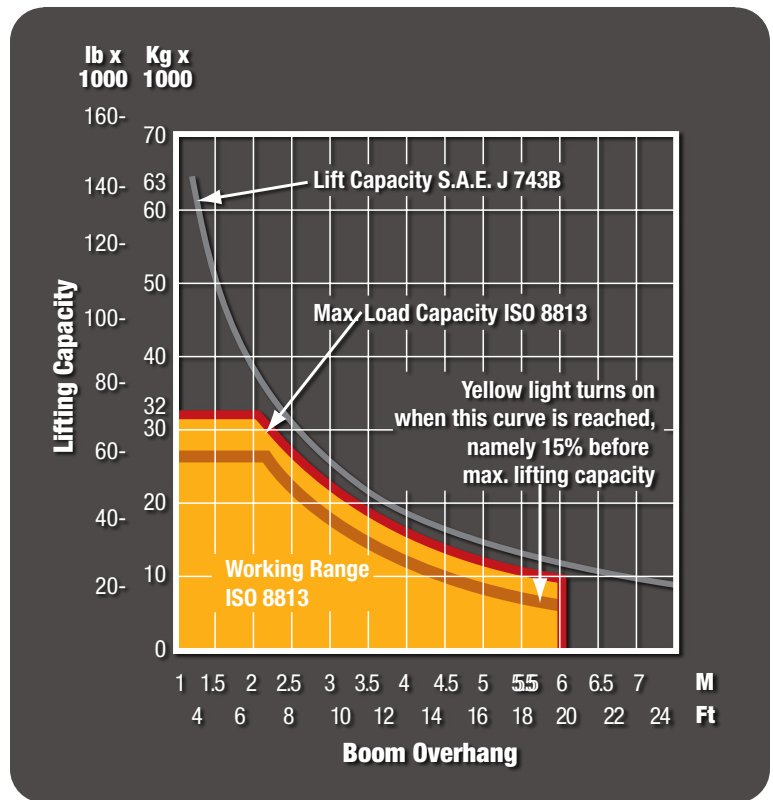
Type	Pressurized type
Max capacity	115 liters - 30.4 U.S. gal

FILTER

Type	Donaldson FI0500
Max capacity	500 liters/min - 132 U.S. gal/min

LIFTING CAPACITY

20 ft / 6.5 m boom

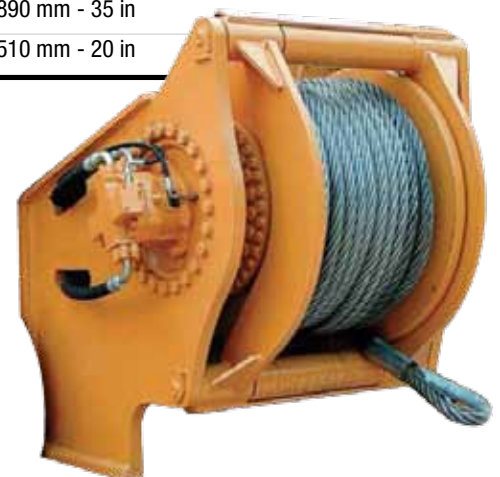


REAR WINCH AVAILABLE

Max line pull	350 KN
Max line speed	0-30 m/min 0-98.4 ft/min
Cable size	36 mm - 1.4 in
Weight	2,800 kg - 6,173 lb
DIMENSIONS	
Drum diameter	530 mm - 20.9 in
Flange diameter	890 mm - 35 in
Drum length	510 mm - 20 in

FEATURES

- CE approved design
- Planetary gear
- Automatic negative brakes
- Anti-friction bearings





HYDRAULIC SYSTEM OPTIONS

ALL HYDRAULIC

- **Freefall System**
When the button is engaged, the load free-falls and then immediately stops when the button is released.
- **Boom Kick-Out System**
This system will ensure you will never bend another boom.
- **Anti-Two Block**
Sets a minimum distance between the top block and the hook block, preventing collisions between them.

ELECTRONIC OVER HYDRAULIC

- **Freefall system, Boom kick-out system and anti-two block plus:**
- **Anti-Tipping System**
Prevents tipping by calculating the maximum load that can be lifted.



STATE-OF-THE-ART CABIN



- **CONTROLS**

With only 2 joysticks, the operator can operate both winches, increase/decrease the engine's throttle, and control the machine's travel.

- **TRANSMISSION PILOT LEVERS**

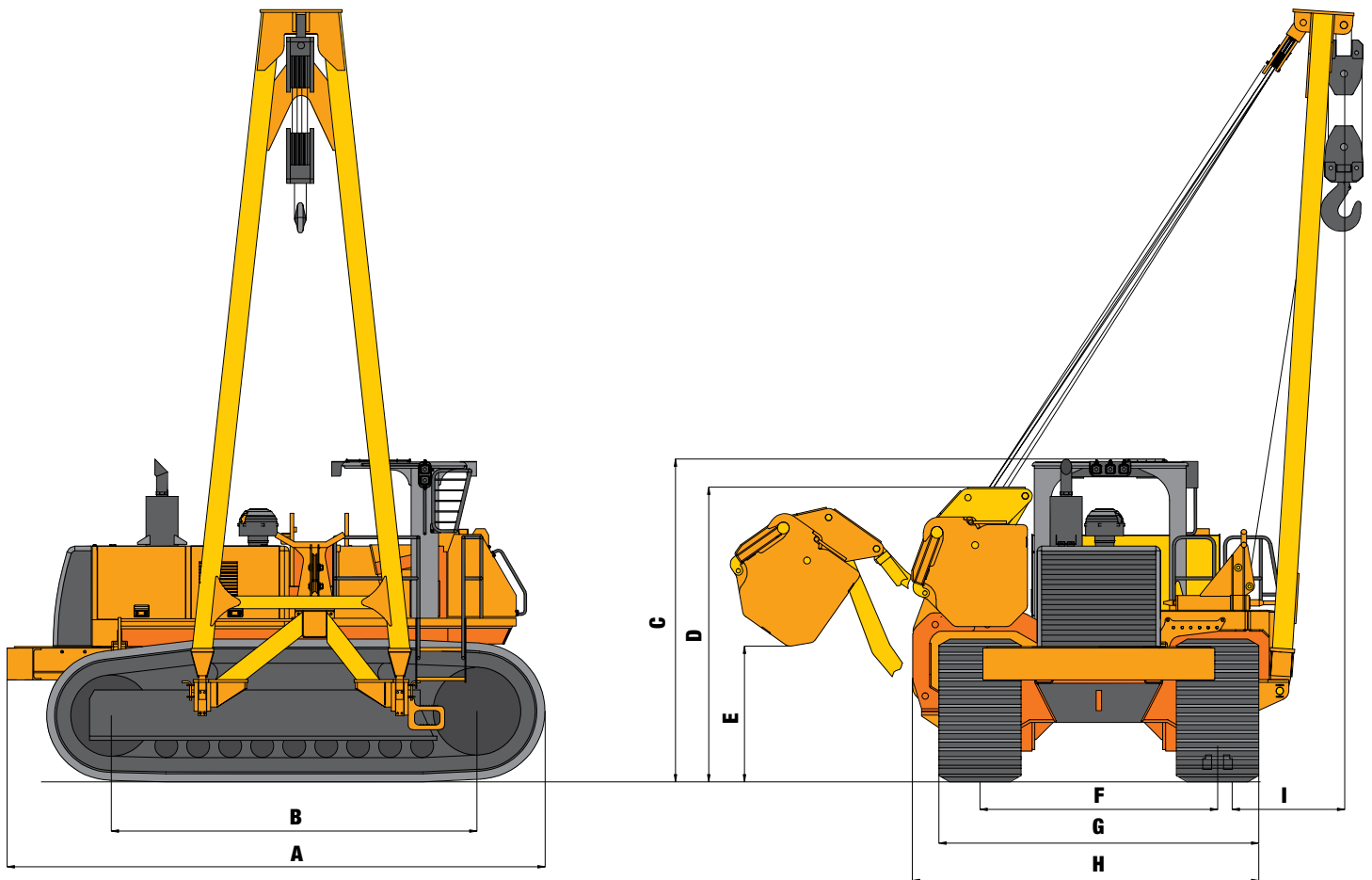
There are 2 extra pilot levers for the transmission, which can assist the operator in making precise maneuvers, such as turning in a steep hill or making pin-point movements to couple the pipes.

- **LCD DISPLAY**

It displays relevant information in a beautiful, easy to read, graphical interface. It can also be adjusted for day or night viewing.

DIMENSIONS

Operating weight 101,400 lb / 45,995 kg



	Feet	Meters
A Overall length	17.7 ft	5.4 m
B Length of tracks on ground	12.1 ft	3.68 m
C Height to top of ROPS	10.8 ft	3.3 m
D Height to top of counterweight (retracted)	10.2 ft	3.1 m
E Height to bottom of counterweight (extended)	2.1 ft	98 cm
F Track gauge	7.9 ft	2.4 m
G Width of tracks		
Standard shoes	10.3 ft	3.15 m
Optional shoes	10.7 ft	3.25 m
H Shipping width (left frame removed)		
Standard shoes	11 ft	3.36 m
Optional shoes	11.2 ft	3.4 m
I Boom overhang		
Minimum	3.9 ft	1.22 m
Maximum	25 ft	7.5 m

AVAILABLE MODELS



Coming soon: SPX-460 | 46-Ton



SPX-660 | 66-Ton



SPX-960 | 96-Ton

CONTACT INFORMATION

Europe

Phone +49.0.231.963.3073

pipelinece@wwmach.com

Russia, China and the Middle East

Phone +39.349.198.1281 Italy

Phone +7.495.507.4827 Russia

fsupipeline@wwmach.com

India

Phone +91.11.414.59230

pipelineind@wwmach.com

Africa

Intl. Toll Free 800.9675.3948

pipeline@wwmach.com

North America

Phone +1.281.457.4400

pipelinena@wwmach.com

Latin America

Phone +52.81.8.394.0160

pipelinesa@wwmach.com

Brazil

Phone 800.9675.3948

pipelinebr@wwmach.com

Australia

Phone +61.0.400.144.432

pipelinece@wwmach.com



16031 East Freeway

Houston, TX 77530

Phone 281.457.4400 Fax 281.452.5455

U.S. Toll Free 800.383.2666 Intl. Toll Free 800.9675.3948

pipeline@wwmach.com

www.worldwidemachinery.com