



Pipeline Accessories

Hydraulic wedge mandrels

Bending sets

Line-up clamps

Roli-cradles



PIPELINE ACCESSORIES

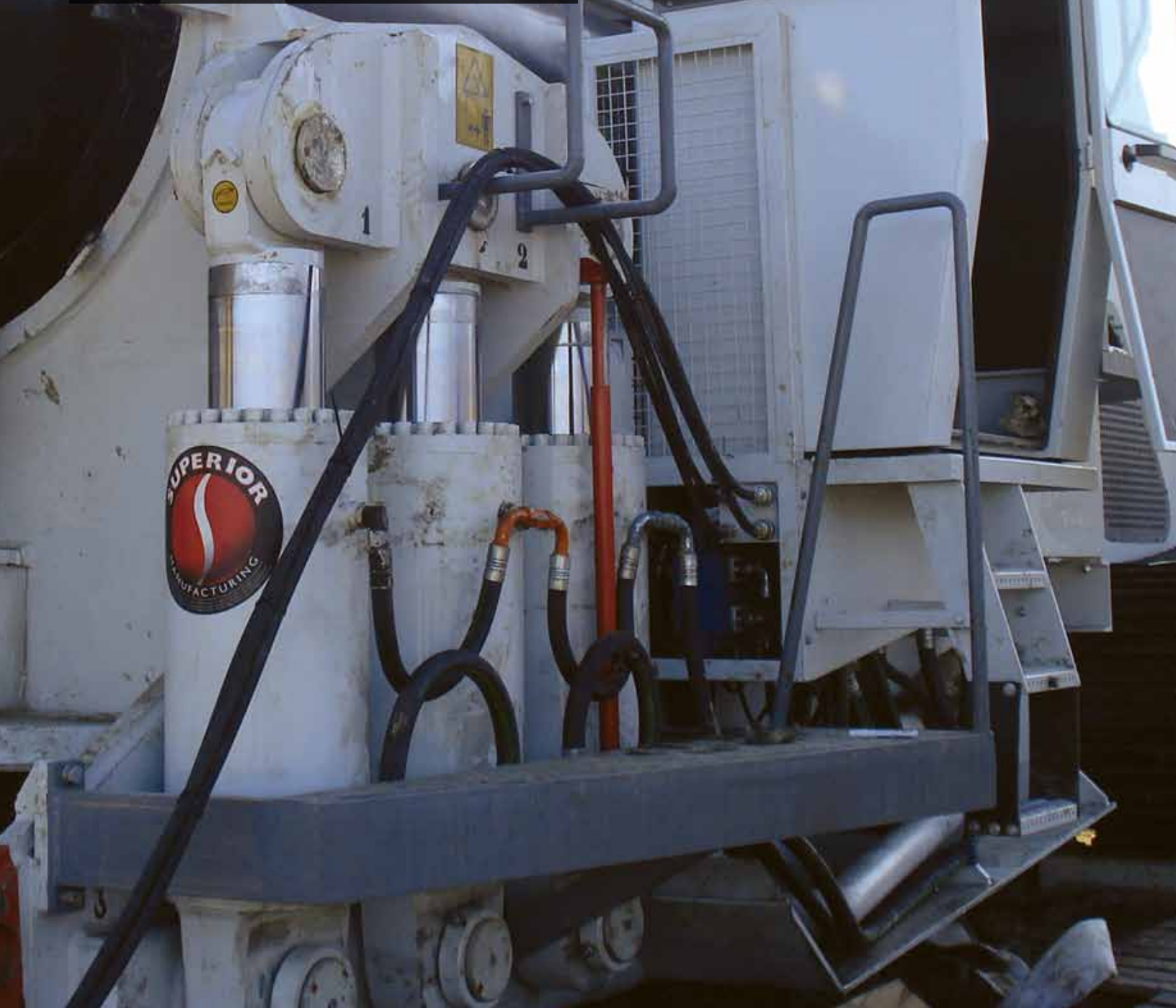
PERFECT COMPLEMENT TO YOUR BENDING MACHINE

In addition to the full range of pipe bending machines, SUPERIOR Manufacturing offers pipe bending accessories that work seamlessly with the Millennium Series bending machines.

We offer hydraulic or pneumatic mandrels in a wide range of sizes which can be easily attached to the bending machine's spools and bare or lined bending sets.

Line-up clamps are also available for all pipe sizes and include standard motorized travel for 20 inches and above.

All our accessories are made with the same quality material used in the manufacturing of the bending machines, reinforced in areas of high stress.



BENDING SETS



FIELD INSTALLATION

The largest pipe size in a given pipe bending machine range requires a bending die only. In certain cases, adapter plates for the pin-up, the pin-up clamp and the stiff-back are needed. Check with your SUPERIOR representative.

- A different size bending set is required for each diameter of pipe.
- Standard bending sets will accommodate pipe manufactured to API-5L.
- Your SUPERIOR Bending Machine requires a SUPERIOR Bending Set to produce maximum accuracy.
- SUPERIOR Bending Sets are available bare or with linings to accommodate special conditions and non-standard pipe or coating.

OVERVIEW

SUPERIOR bending sets are manufactured with high quality steel construction, with additional welding and reinforcement in high stress areas for maximum strength. The internal surface is finished with tooling machines for exceptional accuracy. These bending sets are compatible with bending machines made by other manufacturers.

BENDING SET RECOMMENDATIONS

Standard bare Bending Sets

Bare pipe, coal tar, asphalt and annular extruded polyethylene up to 4mm thickness. Over 4mm coating thickness, special bare bending sets may be required.

Lined Die with remainder of set bare

Spiral welded pipe, side extruded polyethylene

Lined Bending Sets including die

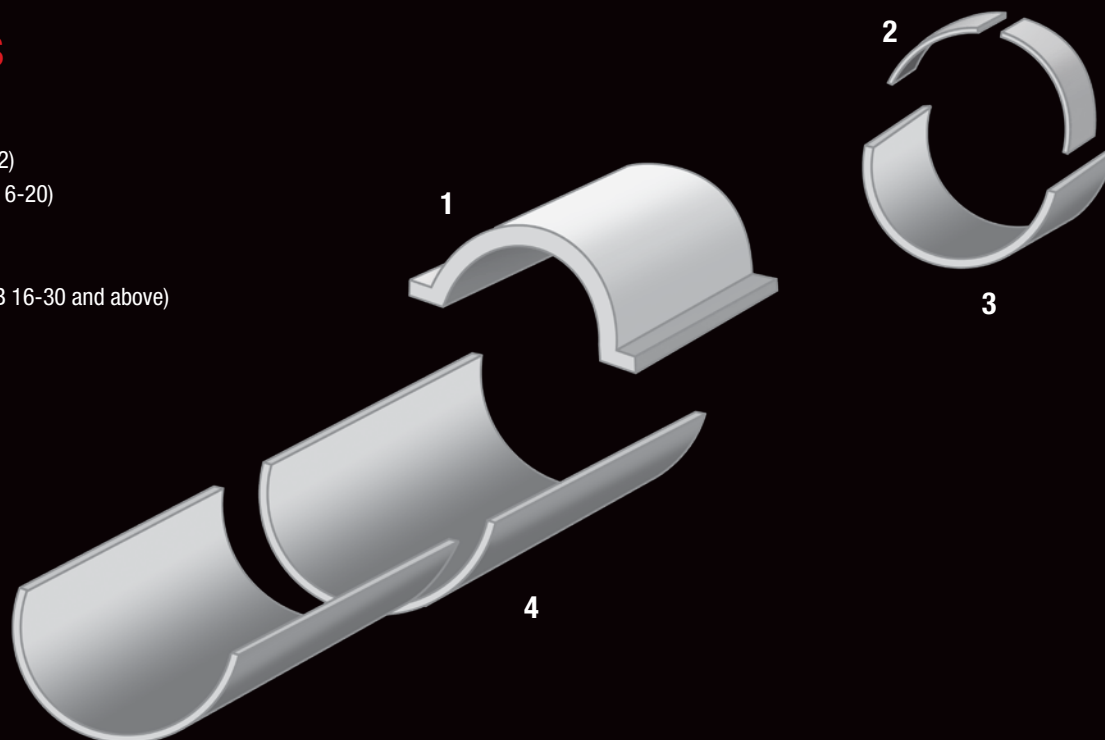
Epoxy (thin film) polyethylene tape,
PVC tape Special Bending Sets:

Foam coated pipe, small radius bends.

These recommendations do not constitute a warranty.

COMPONENTS

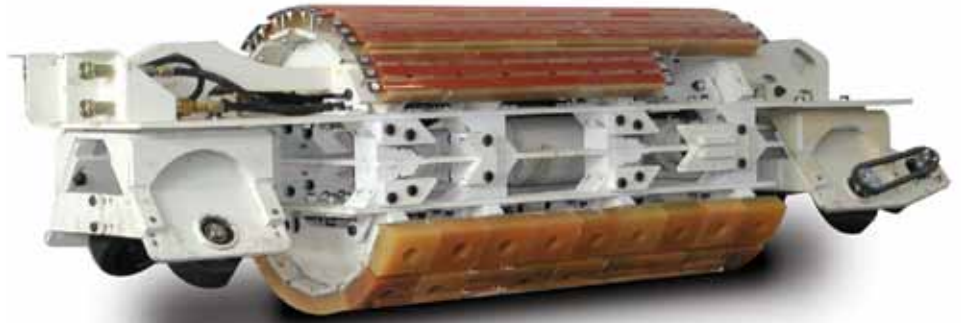
1. Bending die
2. Pin-up clamp liners (2)
(not used on the SPB 6-20)
3. Pin-up liner
4. Stiff back liner
(two parts on the SPB 16-30 and above)



HYDRAULIC WEDGE MANDRELS

OVERVIEW

SUPERIOR's line of mandrels are available for all pipe diameter sizes and are designed for thicker wall pipe. They are designed to complement all SUPERIOR pipe bending machines, which have 2 extra hydraulic valves that can power any of our hydraulic mandrels.



MODEL	PIPE SIZE	DIMENSIONS			WEIGHT
SWH 10	10 in / 254 mm	L: 73 in / 1,850 mm	W: 8 in / 203 mm	H: 8 in / 203	374 lbs / 170 kg
SWH 12-14	12-14 in / 304.8-355.6 mm	L: 81 in / 2,050 mm	W: 12 in / 305 mm	H: 12 in / 305 mm	440 lbs / 200 kg
SWH 16-18	16-18 in / 406.4-457.2 mm	L: 86.5 in / 2,200 mm	W: 16 in / 407 mm	H: 16 in / 407 mm	924 lbs / 420 kg
SWH 20-22	20-22 in / 508-558.8 mm	L: 95.5 in / 2,430 mm	W: 20 in / 508 mm	H: 20 in / 508 mm	1,452 lbs / 660 kg
SWH 24-26	24-26 in / 609.6-660.4 mm	L: 107.5 in / 2,730 mm	W: 22 in / 559 mm	H: 22 in / 559 mm	1,760 lbs / 800 kg
SWH 28	28 in / 711.2 mm	L: 107.5 in / 2,730 mm	W: 24 in / 610 mm	H: 24 in / 610 mm	2,904 lbs / 1,320 kg
SWH 30-32	30-32 in / 762-812.8 mm	L: 123.5 in / 3,140 mm	W: 28 in / 711 mm	H: 28 in / 711 mm	3,795 lbs / 1,725 kg
SWH 34-36	34-36 in / 863.6-914.4	L: 123.5 in / 3,140 mm	W: 31 in / 787 mm	H: 31 in / 787 mm	3,927 lbs / 1,785 kg
SWH 36-38	36-38 in / 914.4-965.2 mm	L: 115 in / 2,920 mm	W: 33 in / 838 mm	H: 33 in / 838 mm	5,390 lbs / 2,450 kg
SWH 40-42	40-42 in / 1,016-1,066.8 mm	L: 115 in / 2,920 mm	W: 37 in / 940 mm	H: 37 in / 940 mm	5,522 lbs / 2,510 kg
SWH 42-44	42-44 in / 1,066.8-1,117.6 mm	L: 158 in / 4,013 mm	W: 39 in / 990 mm	H: 39 in / 990 mm	8,020 lbs / 3,638 kg
SWH 46-48	46-48 in / 1,168.4-1,219.2 mm	L: 158 in / 4,013 mm	W: 43 in / 1,092 mm	H: 43 in / 1,092 mm	9,504 lbs / 4,320 kg
SWH 48-50	48-50 in / 1,219.2-1,270 mm	L: 158 in / 4,013 mm	W: 45 in / 1,143 mm	H: 45 in / 1,143 mm	11,030 lbs / 5,003 kg
SWH 52-54	52-54 in / 1,320.8-1,371.6 mm	L: 158 in / 4,013 mm	W: 49 in / 1,245 mm	H: 49 in / 1,245 mm	11,946 lbs / 5,430 kg
SWH 56-58	56-58 in / 1,422.4-1,473.2 mm	L: 158 in / 4,013 mm	W: 50 in / 1,270 mm	H: 50 in / 1,270 mm	13,112 lbs / 5,960 kg
SWH 60-62	60-62 in / 1,524-1,574.8 mm	L: 158 in / 4,013 mm	W: 54 in / 1,372 mm	H: 54 in / 1,372 mm	13,640 lbs / 6,200 kg
SWH 64-66	64-66 in / 1,625.6-1,676.4 mm	L: 158 in / 4,013 mm	W: 58 in / 1,473 mm	H: 58 in / 1,473 mm	14,828 lbs / 6,740 kg



PNEUMATIC WEDGE MANDRELS

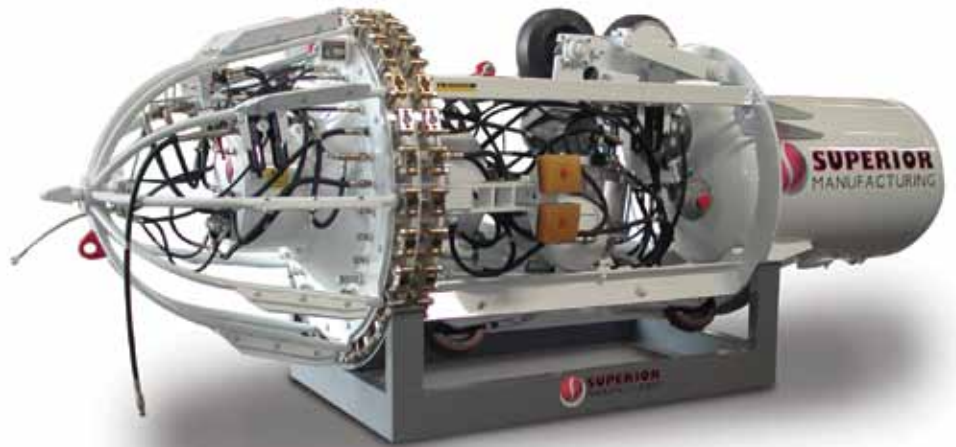
SUPERIOR also offers pneumatic wedge mandrels upon request. These pneumatic mandrels operate with an air compressor.



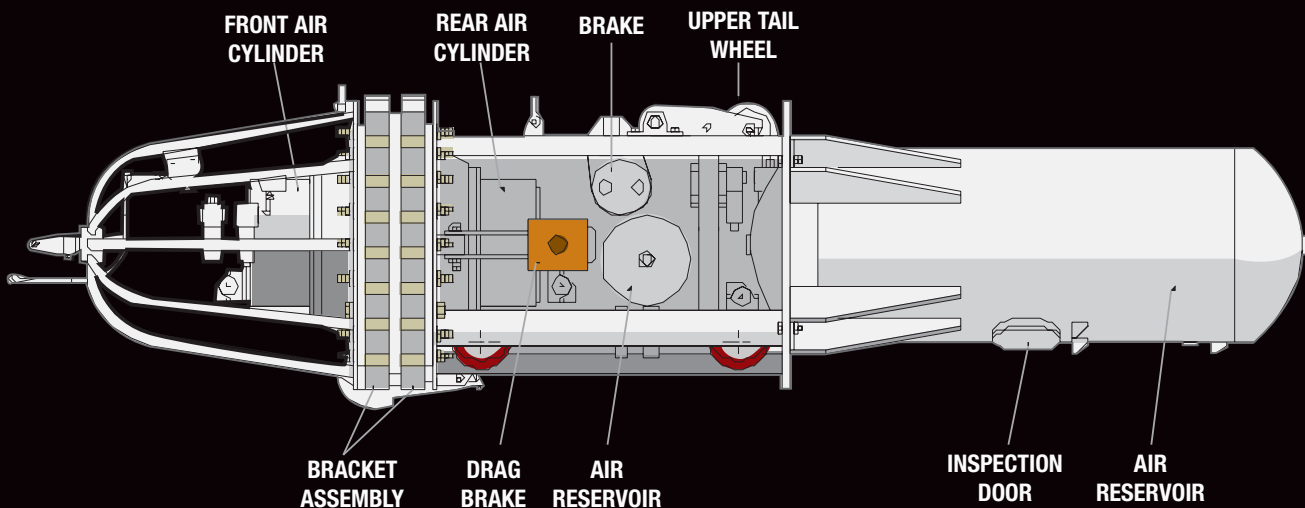
LINE-UP CLAMPS

OVERVIEW

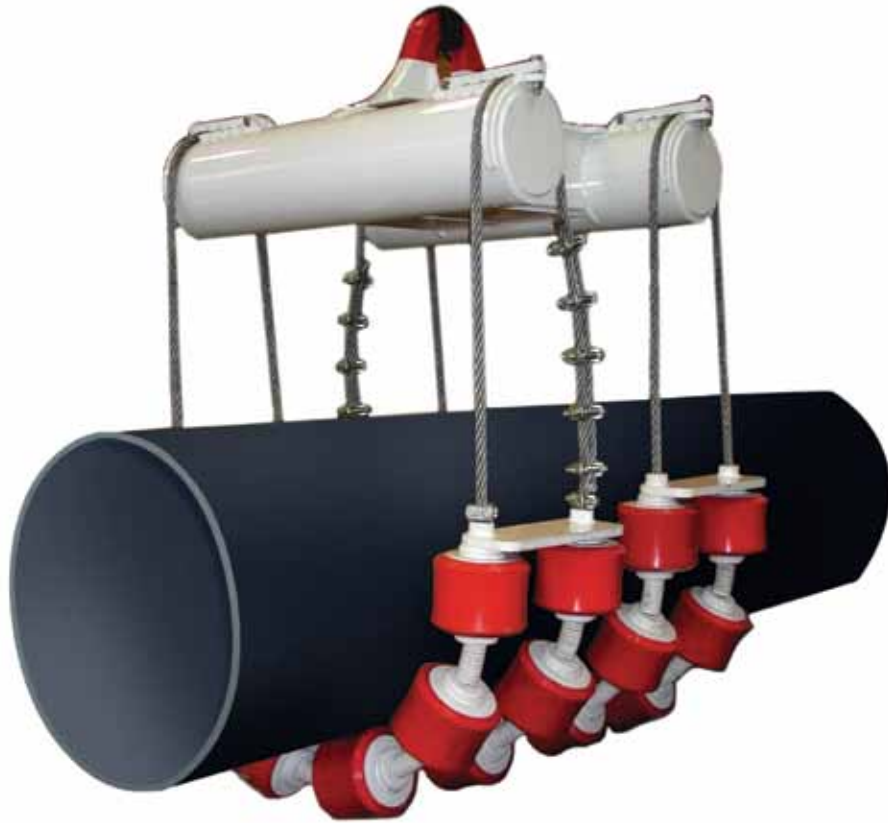
SUPERIOR's internal pneumatic line-up clamps are available for all pipe diameter sizes and are made with the highest quality components. Motorized travel is standard at 20 inches and above. Optional motorized travel is also available for sizes below 20 inches.



MODEL	PIPE SIZE	DIMENSIONS			WEIGHT
SLC 8	8 in / 203.2 mm	L: 59.5 in / 1,510 mm	W: 7.5 in / 190 mm	H: 9 in / 229 mm	253 lbs / 115 kg
SLC 10	10 in / 254 mm	L: 64 in / 1,625 mm	W: 10 in / 254 mm	H: 11.5 in / 292 mm	286 lbs / 130 kg
SLC 12-14	12-14 in / 304.8-355.6 mm	L: 90.5 in / 2,300 mm	W: 12 in / 305 mm	H: 13.5 in / 343 mm	319 lbs / 145 kg
SLC 16-18	16-18 in / 406.4-457.2 mm	L: 95.5 in / 2,430 mm	W: 16 in / 406 mm	H: 17.5 in / 445 mm	418 lbs / 190 kg
SLC 20-22	20-22 in / 508-558.8 mm	L: 105 in / 2,680 mm	W: 18.5 in / 469 mm	H: 20 in / 508 mm	693 lbs / 315 kg
SLC 24-26	24-26 in / 609.6-660.4 mm	L: 113.5 in / 2,880 mm	W: 26 in / 660 mm	H: 27.5 in / 698 mm	935 lbs / 425 kg
SLC 28	28 in / 711.2 mm	L: 113.5 in / 2,880 mm	W: 28 in / 710 mm	H: 29.5 in / 749 mm	1,122 lbs / 510 kg
SLC 30-32	30-32 in / 762-812.8	L: 124.5 in / 3,160 mm	W: 30 in / 762 mm	H: 31.5 in / 800 mm	1,148 lbs / 522 kg
SLC 34-36	34-36 in / 863.6-914.4 mm	L: 134 in / 3,400 mm	W: 36 in / 910 mm	H: 37.5 in / 952 mm	2,640 lbs / 1,200 kg
SLC 40-42	40-42 in / 1,016-1,066.8 mm	L: 140 in / 3,550 mm	W: 40 in / 1,016 mm	H: 41.5 in / 1,054 mm	3,080 lbs / 1,400 kg
SLC 46-48	46-48 in / 1,168.4-1,219.2 mm	L: 151 in / 3,850 mm	W: 45 in / 1,143 mm	H: 46.5 in / 1,181 mm	4,290 lbs / 1,950 kg
SLC 50-52	50-52 in / 1,270-1,320.8 mm	L: 157 in / 4,000 mm	W: 50 in / 1,270 mm	H: 51.5 in / 1,308 mm	4,620 lbs / 2,100 kg
SLC 54-56	54-56 in / 1,371.6-1,422.4 mm	L: 157 in / 4,000 mm	W: 54 in / 1,372 mm	H: 55.5 in / 1,410 mm	4,950 lbs / 2,250 kg
SLC 56-60	56-60 in / 1,422.4-1,524 mm	L: 181 in / 4,600 mm	W: 58 in / 1,473 mm	H: 59.5 in / 1,511 mm	5,170 lbs / 2,350 kg
SLC 60-64	60-64 in / 1,524-1,625.6 mm	L: 181 in / 4,600 mm	W: 62 in / 1,575 mm	H: 63.5 in / 1,613 mm	5,720 lbs / 2,600 kg



ROLI-CRADLES



SHIPPING DIMENSIONS

MODEL	LENGTH	WIDTH	HEIGHT	WEIGHT
SRC 6-12	42 in / 1,067 mm	22 in / 559 mm	30 in / 762 mm	1,135 lbs / 515 kg
SRC 12-26	42 in / 1,067 mm	36 in / 914 mm	39 in / 1,000 mm	1,500 lbs / 680 kg
SRC 24-38	56 in / 1,422 mm	65 in / 1,650 mm	39 in / 1,000 mm	4,960 lbs / 2,250 kg
SRC 36-50	56 in / 1,422 mm	72 in / 1,829 mm	45 in / 1,150 mm	6,425 lbs / 2,914 kg
SRC 48-62	56 in / 1,422 mm	84 in / 2,134 mm	49 in / 1,250 mm	7,240 lbs / 3,284 kg

SHIPPING DIMENSIONS

MODEL	SIZE	NO. OF STRINGS	NO. OF ROLLERS PER STRING	TOTAL ROLLERS	MAX. LOAD
SRC 6-12	6-12 in / 152.4-304.8 mm	2	10	20	16,923 lbs / 8,000 kg
SRC 12-26	12-26 in / 304.8-660.4 mm	2	12	24	28,662 lbs / 13,000 kg
SRC 24-38	24-38 in / 609.6-962.2 mm	2	14	28	56,500 lbs / 35,000 kg
SRC 36-50	36-50 in / 914.4-1,270 mm	2	16	32	69,389 lbs / 45,000 kg
SRC 48-62	48-62 in / 1,219.2-1,574.8 mm	2	18	36	105,380 lbs / 55,000 kg

MAXIMUM LOAD: The capacities given in the table above are calculated with a safety factor of 5:1

AVAILABLE ACCESSORIES

CONTACT INFORMATION



Mandrels



Line-up clamps



Roli-cradles



Bending sets

Europe

Phone +49.0.231.963.3073

pipelinece@wwmach.com

Russia, China and the Middle East

Phone +39.349.198.1281 Italy

Phone +7.495.507.4827 Russia

fsupipeline@wwmach.com

India

Phone +91.11.414.59230

pipelineind@wwmach.com

Africa

Intl. Toll Free 800.9675.3948

pipeline@wwmach.com

North America

Phone +1.281.457.4400

pipelinena@wwmach.com

Latin America

Phone +52.81.8.394.0160

pipelinesa@wwmach.com

Brazil

Phone 800.9675.3948

pipelinebr@wwmach.com

Australia

Phone +61.0.400.144.432

pipelinece@wwmach.com



16031 East Freeway

Houston, TX 77530

Phone 281.457.4400 Fax 281.452.5455

U.S. Toll Free 800.383.2666 Intl. Toll Free 800.9675.3948

pipeline@wwmach.com

www.worldwidemachinery.com