



SPX-960 Pipelayer

Max lift capacity	96,000 kg / 211,200 lb
Operating weight	61,000 kg / 134,500 lb
Net flywheel power	324 kW / 440 HP



SPX-960 PIPELAYER

- **TIER 3 ENGINE**

All SPX-Series pipelayers are built with Caterpillar Tier 3 engines.

- **HYDROSTATIC SYSTEM**

State-of-the-art hydrostatic system insures safety and reliability and is especially efficient when working on steep grades.

- **HYDRAULIC KIT**

The same kit used in the conversion of Caterpillar, Komatsu and Fiat pipelayers is used on this machine.

- **SAFETY**

Safety has always been a big focus for us. Some of the safety features are our new ATP-Plus anti-tipping system, electronic boom kick-out, anti-two block and free fall.

- **ROPS/FOPS**

Optional ROPS/FOPS is designed in such a way to allow the operator a clear view of the top of the boom and the load.

- **COUNTERWEIGHT RACK**

New design which makes the counterweight system easy to assemble and disassemble.



GENERAL SPECIFICATIONS

ENGINE

Type	Caterpillar
Model	C13 ACERT
Net flywheel power (DIN 6270-SAEJ 1349)	440 HP - 324 kW
Governed speed	2,200 rpm
Displacement	12.5 lt - 763 cu in

HYDRAULIC SYSTEM

Main pumps	(Bosch-Rexroth) 4 independent variable pumps
Maximum capacity	2x450 lt/min - 2x119 U.S. gal/min
Service pumps	1 tandem gear type
Maximum capacity	50 lt/min - 13 U.S. gal/min

TRANSMISSION

Type	Hydrostatic closed circuit
Brakes	(4) Integrated negative control
Final drives	Epicycloidal oil soaked
Maximum speed:	
- 1 speed	1.7 km/h - 1 miles/h
- 2 speed	2.6 km/h - 1.6 miles/h
- 3 speed	5.3 km/h - 3.3 miles/h

CONTROLS

Type	Twin pilot operated
Safety	Emergency shut-off

TPS System: twin steering system to provide with other two levers, to drive the track independently in order to guarantee small and precise movements.

BOOM

Type	Std. 28 ft / 8.5 m welded box square section
Optional	30 ft / 9.1 m welded box square section
Diameter wire rope	19 mm - 3/4 in
Minimum breaking strength rope	323 KN - 72,530 lb
Part load line	6
Part boom line	5

ADJUSTABLE COUNTERWEIGHTS

QD-CS: quick-disconnected counterweight system. For the possibility of disassembly in a short time (all the counterweight pack.)	
Removable counterweight	18 leaves 600 kg - 1,300 lb each
Total weight extendable	13,500 kg - 29,700 lb

TRACK FRAME

Hard track frame with sealed and lubricated chain D9H type	
Number of bottom rollers	9+9
Number of carrying rollers	2+2
Gauge	2.6 m - 8.5 ft
Length of track on the ground	4.08 m - 13.4 ft
Standard shoes width	914 mm - 36 in
Ground pressure	0.83 kg/cm ² - 12 p.s.i.
Optional shoes width	1015 mm - 40 in
Ground pressure	0.74 kg/cm ² - 10.8 p.s.i.
Pitch chain	260.35 mm - 10.25 in

FLUID CAPACITIES

Fuel tank	720 liters / 190 U.S. gal
Hydraulic system circuit	345 liters / 91 U.S. gal
Cooling system	65 liters / 17.2 U.S. gal
Engine oil	34 liters / 9 U.S. gal
Final drive each	12 liters / 3.4 U.S. gal

ELECTRIC SYSTEM

Operating voltage	24 V
Maintenance free supplied batteries	2
Capacity (total)	220 Ah
Starter capacity	7.5 Kw
Alternator	55 A

HYDRAULIC WINCHES

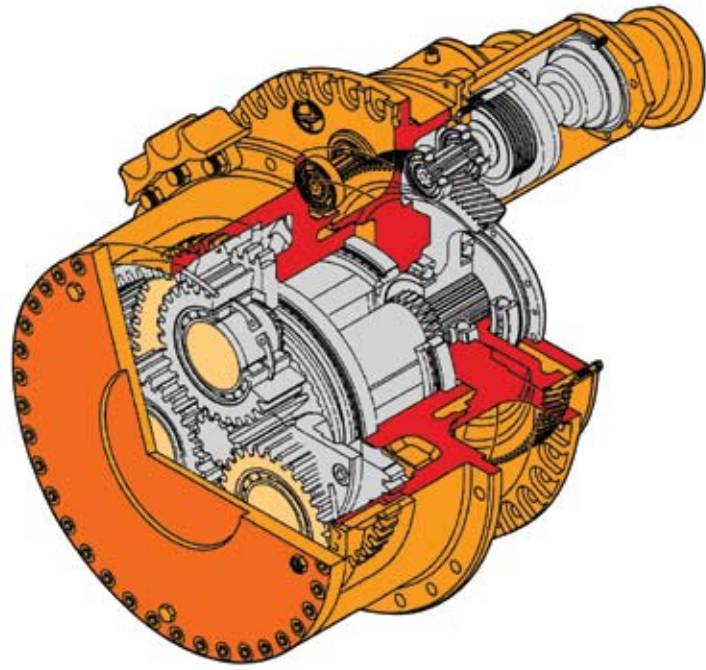
Type	Hydraulic controlled drums (reversible.) Driven by variable flow hydraulic pump and control valve block in open circuit.	
Final drive	Compact hydrostatic drive unit, three-stage planetary gear	
Brakes	Integrated multiple disk brake, spring applied hydraulic release	

WINCH	Hook	Boom
Drum diameter	390 mm/15.3 in	390 mm/15.3 in
Flange diameter	590 mm/23.2 in	530 mm/20.8 in
Drum length	360 mm/14.1 in	360 mm/14.1 in
Capacity (19 mm - 3/4in)	136 m/446 ft	105 m/344 ft
Wire rope installed	68 m/223 ft	51 m/167 ft
Hook speed	0-16 m/min - 0-52 ft/min	

OPTIONAL

Closed cabin
Air conditioning
Rear winch

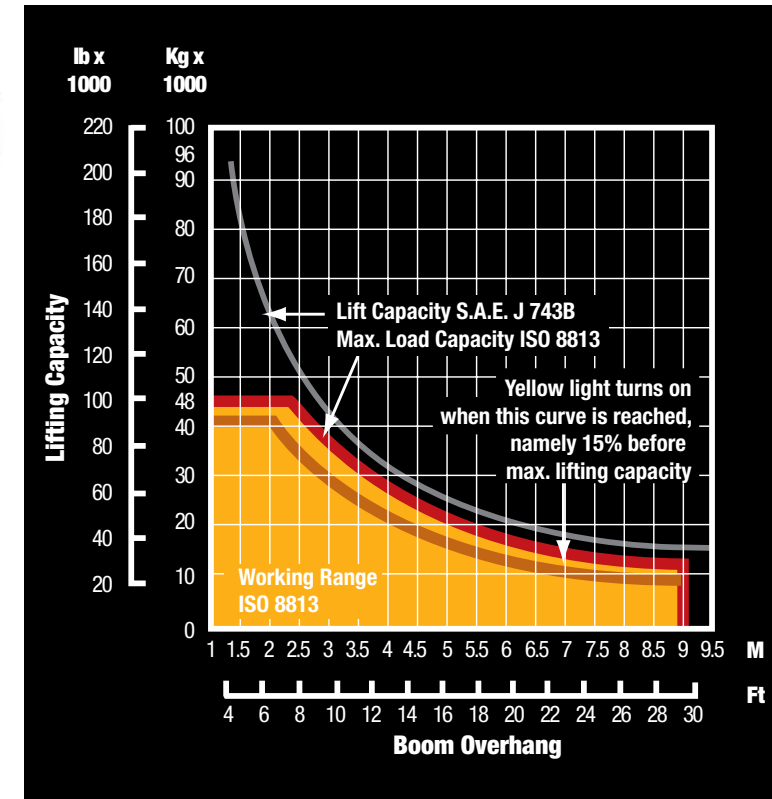
WINCH SPECIFICATIONS



LIFTING CAPACITY

28 ft / 8.53 m boom

Maximum load capacity 48 ton



MAIN PUMP

Type Bosch-Rexroth axial piston variable displacement pump

VALVES

Type Bosch load-sensing mobile control block proportional directional valves

Max capacity 286 liters/min - 75.5 U.S. gal/min

Working pressure 320 bar - 4,642 p.s.i.

CONTROL

Type Pilot units for remote control of winch motors
Progressive and sensitive operations

SERVICE PUMP

Type Gear pump

Max capacity 10 liters.min - 2.6 U.S. gal/min

Working pressure 30 bar - 435 p.s.i.

HYDRAULIC TANK

Type Pressurized type

Max capacity 115 liters - 30.4 U.S. gal

FILTER

Type Donaldson F10500

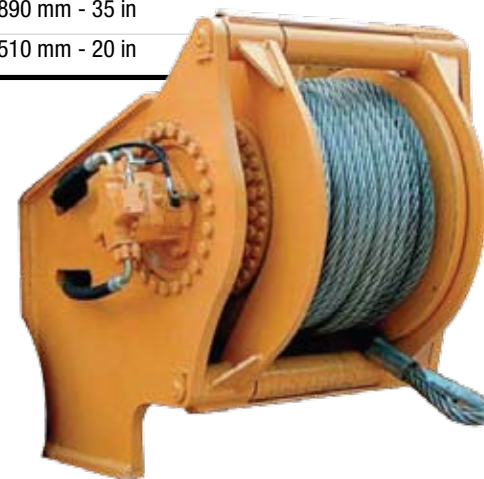
Max capacity 500 liters/min - 132 U.S. gal/min

REAR WINCH AVAILABLE

Max line pull	350 KN
Max line speed	0-30 m/min 0-98.4 ft/min
Cable size	36 mm - 1.4 in
Weight	2,800 kg - 6,173 lb
DIMENSIONS	
Drum diameter	530 mm - 20.9 in
Flange diameter	890 mm - 35 in
Drum length	510 mm - 20 in

FEATURES

- CE approved design
- Planetary gear
- Automatic negative brakes
- Anti-friction bearings



HYDRAULIC SYSTEM OPTIONS

ALL HYDRAULIC

- **Freefall System**
When the button is engaged, the load free-falls and then immediately stops when the button is released.
- **Boom Kick-Out System**
This system will ensure you will never bend another boom.
- **Anti-Two Block**
Sets a minimum distance between the top block and the hook block, preventing collisions between them.

ELECTRONIC OVER HYDRAULIC

- **Freefall system, Boom kick-out system and anti-two block plus:**
- **Anti-Tipping System**
Prevents tipping by calculating the maximum load that can be lifted.



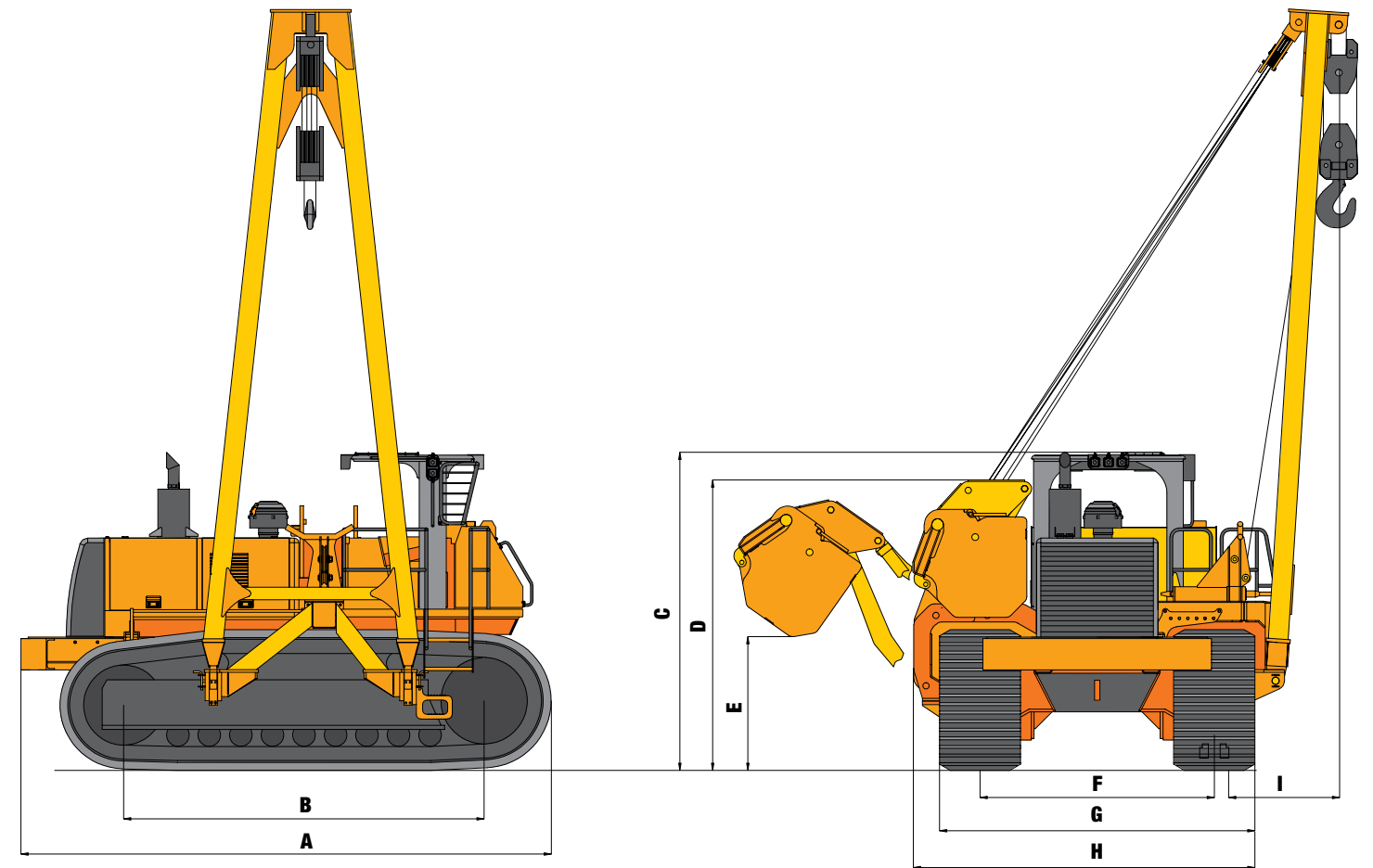
STATE-OF-THE-ART CABIN

- CONTROLS**
 With only 2 joysticks, the operator can operate both winches, increase/decrease the engine's throttle, and control the machine's travel.
- TRANSMISSION PILOT LEVERS**
 There are 2 extra pilot levers for the transmission, which can assist the operator in making precise maneuvers, such as turning in a steep hill or making pin-point movements to couple the pipes.
- LCD DISPLAY**
 It displays relevant information in a beautiful, easy to read, graphical interface. It can also be adjusted for day or night viewing.



DIMENSIONS

Operating weight 134,000 lb / 61,000 kg



	Feet	Meters
A Overall length	19.3 ft	5.9 m
B Length of tracks on ground	13.1 ft	4 m
C Height to top of ROPS	11.5 ft	3.5 m
D Height to top of counterweight (retracted)	10.5 ft	3.2 m
E Height to bottom of counterweight (extended)	4.9 ft	1.5 m
F Track gauge	8.5 ft	2.6 m
G Width of tracks		
36" standard shoes	11.5 ft	3.5 m
40" optional shoes	11.8 ft	3.6 m
H Shipping width (left frame removed)		
36" standard shoes	12.3 ft	3.76 m
40" optional shoes	12.5 ft	3.81 m
I Boom overhang		
Minimum	3.9 ft	1.22 m
Maximum	25 ft	7.5 m

AVAILABLE MODELS

SPX-460 (46-Ton) Coming soon

SPX-660 (66-Ton)

SPX-960 (97-Ton)



CONTACT INFORMATION

Europe

Phone +49.0.231.963.3073

pipelinece@wwmach.com

Russia, China and the Middle East

Phone +39.349.198.1281 Italy

Phone +7.495.507.4827 Russia

fsupipeline@wwmach.com

India

Phone +91.11.414.59230

pipelineind@wwmach.com

Africa

Intl. Toll Free 800.9675.3948

pipeline@wwmach.com

North America

Phone +1.281.457.4400

pipelina@wwmach.com

Latin America

Phone +52.81.8.394.0160

pipelinesa@wwmach.com

Brazil

Phone 0021.800.9675.3948

pipelinebr@wwmach.com

Australia

Phone +61.0.400.144.432

pipelinece@wwmach.com



16031 East Freeway

Channelview, TX 77530

Phone 281.452.5800 Fax 281.452.5455

U.S. Toll Free 800.383.2666 Intl. Toll Free 800.9675.3948

pipeline@wwmach.com

www.worldwidemachinery.com